

A woman with dark hair pulled back, wearing a red lace dress, is shown in profile against a solid red background. Her face is partially in shadow. The dress features intricate black lace patterns, including roses and geometric designs. Her right hand is raised and open.


Ballet Rosa

CRÉATEUR
2023

CHANTILLY

06

—

GARNIER

71

—

ÉTELAN

116

—

AUTRICHE

39

—

VERSAILLES

94

—

BAMBOO

175

—

VINCENNES

25

—

TULLE

130

—

IMPERIALE

82

—

DENTELLE

103

—

INDEX

192

—

FONTAINEBLEAU

58

—

ITALIENNE

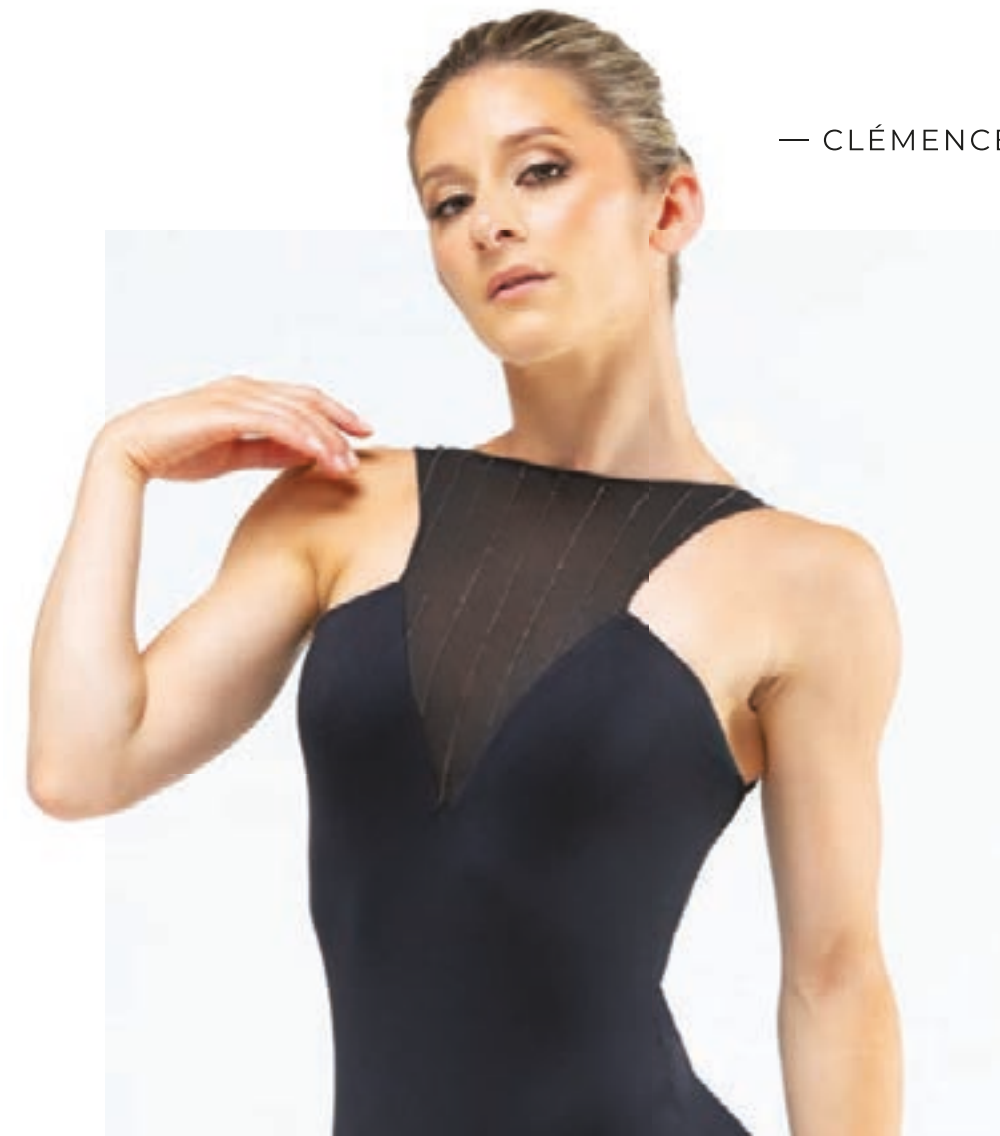
157

—



CHANTILLY —

The sophisticated presence of the Chantilly collection is unmatched. Ornate detailing decorates our buttery soft Italian microfiber, emphasizing distinguished silhouettes that inspire the wearer to stand proudly. This collection is now joined by three new designs, as well as new colors for even more options for any dancer to truly express her inner royalty. New style Clémence features a distinguished high neckline, while Maisie and Réjane highlight design on the back with motifs reminiscent of gilded age fashion. **Nikita wearing Maisie in Viola**



— CLÉMENCE

Adult 36 > 44
Noir · Viola



— MAISIE

Adult 36 - 44
Viola · Noir



RÉJANE —
Adult 36 > 44
Viola - Noir





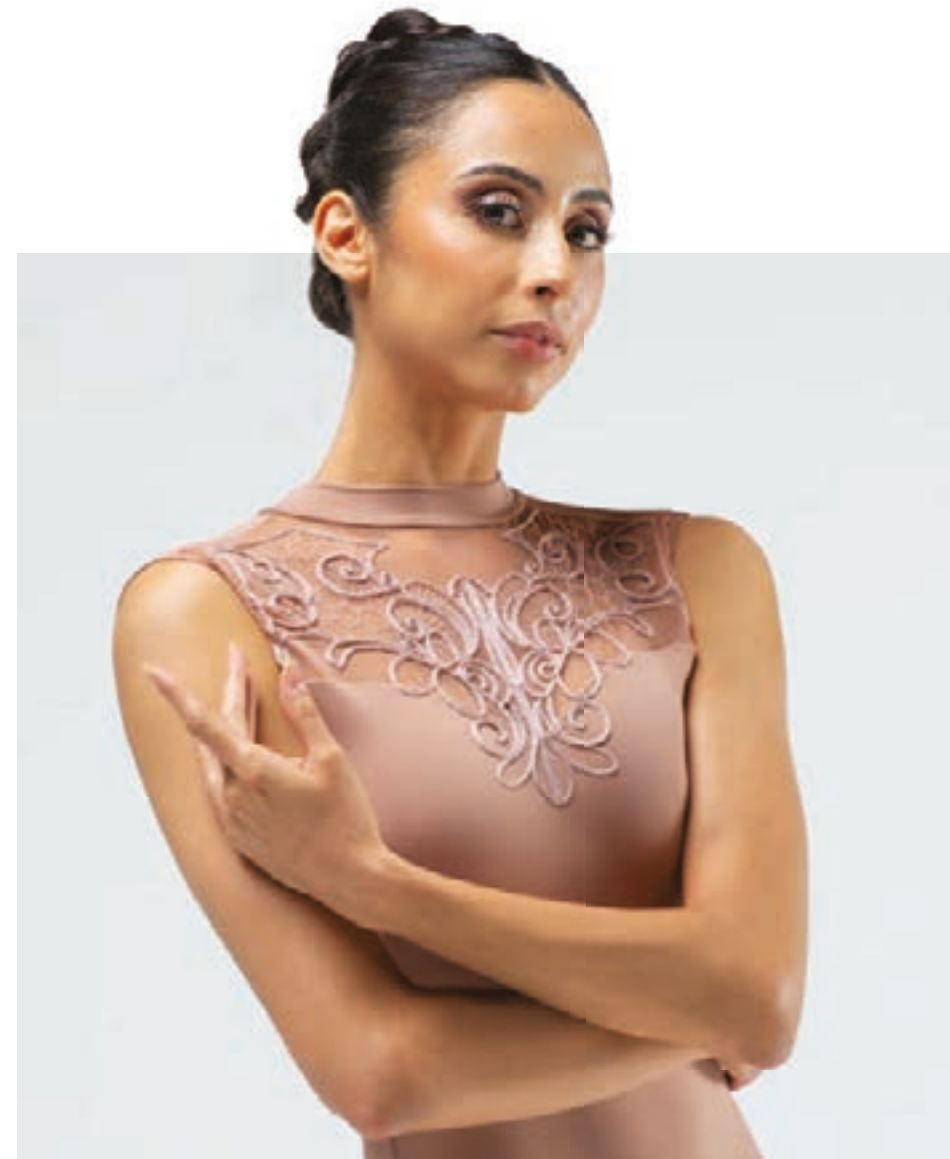
— LUCILLE

Adult 36 › 44 ◊ Youth 10 and 12
Noir · Viola



— PARIS

Adult 36 · 44 ◊ Youth 10 and 12
Café au Lait · Viola · Noir





— EMBER

Adult 36 - 44 ♦ Youth 10 and 12
Viola · Noir





— GINGER

Adult 36 › 44 ◊ Youth 10 and 12
Noir · Viola



HARPER —

Adult 36 › 44 ◊ Youth 10 and 12
Café au Lait · Noir with Gris · Noir with Gold





— VINCENNES

The Vincennes collection exemplifies our drive to explore the unexpected in our new styles, using tasteful cutouts and pairing our antique lace with sleek Matte Lycra, creating an interesting contrast. The collection brings to life five new styles and introduces new colors for 2023. Fall in love with the half-sleeve Moira, the elegant cap sleeved Nicolette, the sleek Soline tank leotard, the enticing Delia tank style, and graceful Evana lace pull on skirt. The styles are all available in timeless Noir and new collection shades Royal and Bordeaux, all made in youth and adult sizing. **Asha wearing Chanel in Royal**



— DELIA

Adult 36 › 44 ◊ Youth 10 and 12
Bordeaux · Noir · Royal



— NICOLETTE

Adult 36 › 44 ◊ Youth 10 and 12
Bordeaux · Royal · Noir



SOLINE —

Adult 36 › 44 ◊ Youth 10 and 12
Noir · Royal · Bordeaux





— MOIRA

Adult 36 › 44 ◊ Youth 10 and 12
Noir · Royal · Bordeaux



Skirt

— EVANA

Adult 36/38 › 40/42 ◊ Youth 8/10 and 12/14

Royal · Noir · Bordeaux

Pictured with Laura leotard



— LAURA

Adult 36 › 44 ◊ Youth 10 and 12

Royal · Noir · Bordeaux

CHANEL —

Adult 36 › 44 ◊ Youth 10 and 12
Bordeaux · Noir · Royal





The evolution of our most iconic collection continues. Autriche is named for the rich, rosy Austrian lace that embellishes each piece. We are excited to welcome two new designs: Alexine, a high neck style with intricate lace framing the open back, and Alba, a camisole leotard with lace embroidered mesh panels that extend from the shoulders down the back. This collection features our five most popular colors: Noir, Marine, Royal, Bordeaux, and Blanc. Each style is front lined and crafted with smooth, Italian Matte Lycra. This evocative collection offers styles in both youth and adult sizing. **Nadyne wearing Alexine in Bordeaux**

— AUTRICHE



— ALEXINE

Adult 36 › 44 ◊ Youth 10 and 12
Royal · Noir · Blanc · Marine · Bordeaux



— MIRIELLE

Adult 36 > 44 ♦ Youth 10 and 12
Blanc · Noir · Marine · Royal · Bordeaux



— ALBA

Adult 36 › 44 ◊ Youth 10 and 12
Bordeaux · Royal · Noir · Marine · Blanc

AMÉLIE —



Adult 36 › 44 ◊ Youth 8 › 12
Royal · Blanc · Noir · Bordeaux · Marine



EMMELINE —

Adult 36 · 44 ◊ Youth 8 · 12

Marine · Bordeaux · Noir · Blanc · Royal



ESTHER —

Adult 36 · 44 ◊ Youth 8 · 12
Blanc · Bordeaux · Royal · Marine · Noir





— JOSEPHINE

Adult 36 · 44 · Youth 8 · 12

Blanc · Bordeaux · Marine · Noir · Royal





— BERENICE

Adult 36 > 44 ♦ Youth 8 > 12

Blanc · Marine · Royal · Bordeaux · Noir





— ALY

Adult 36 › 44 ◊ Youth 8 › 12
Bordeaux · Royal · Noir · Blanc · Marine



— LUCIENNE

Adult 36 › 44 ◊ Youth 10 and 12
Noir · Blanc · Marine · Bordeaux · Royal

Long, smooth lines stream along the contours of the body, and laser cut petals flow across the fabric of the Fontainebleau collection. This collection introduces two new designs that showcase our innovative laser cutting method, embodying Ballet Rosa's mastery of technique and design. Meet the Xenia and Calliope leotards which take inspiration from nature, depicting flowing leaf-like motifs. Each style is made with sleek Matte Lycra that moves and stretches with the body. In Noir and new colors Raspberry and Martine. The styles in this collection are available in adult sizing only. **Asha wearing Calliope in Raspberry**

FONTAINEBLEAU —



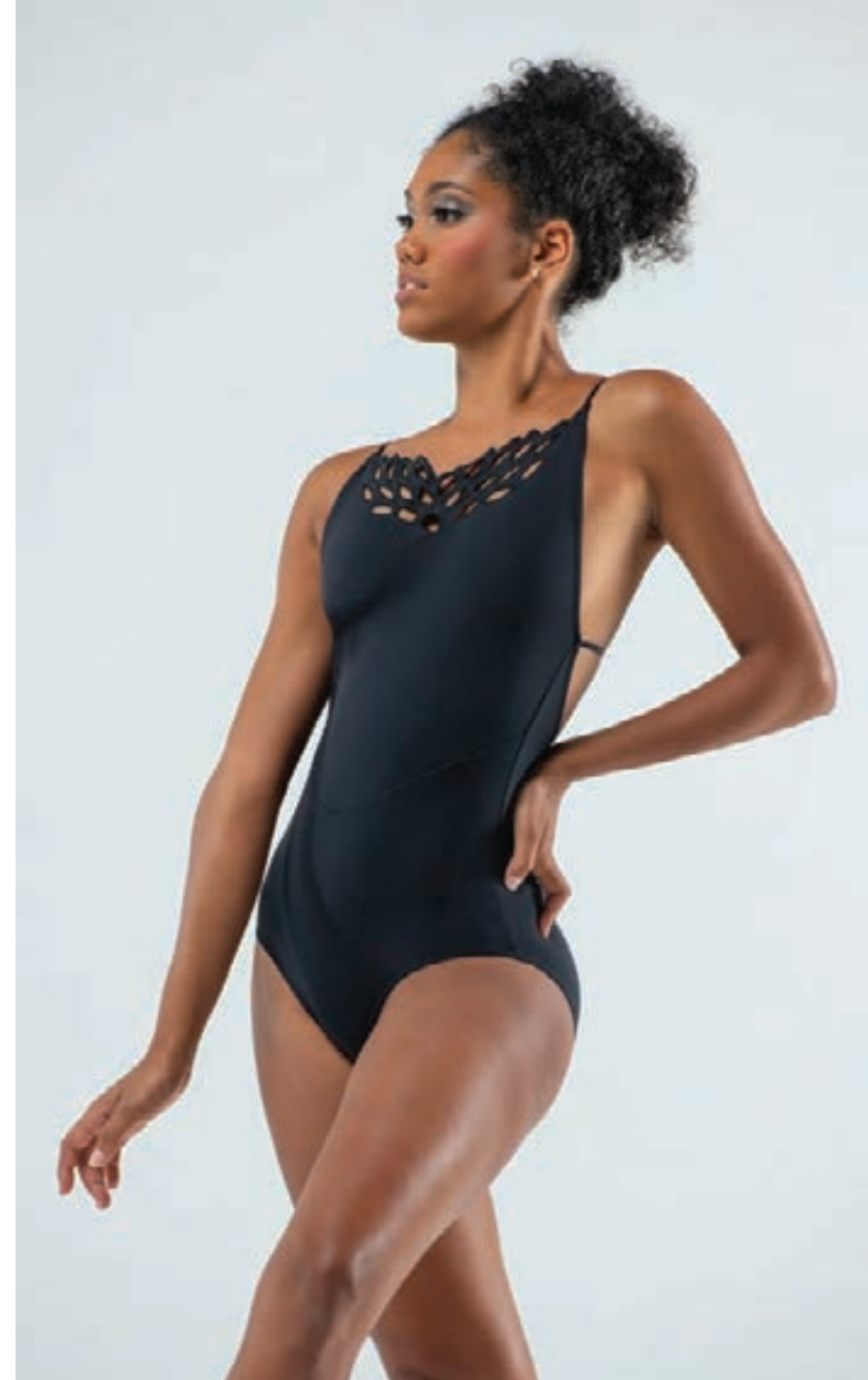


— XENIA

Adult 36 > 44

Marine · Raspberry · Noir

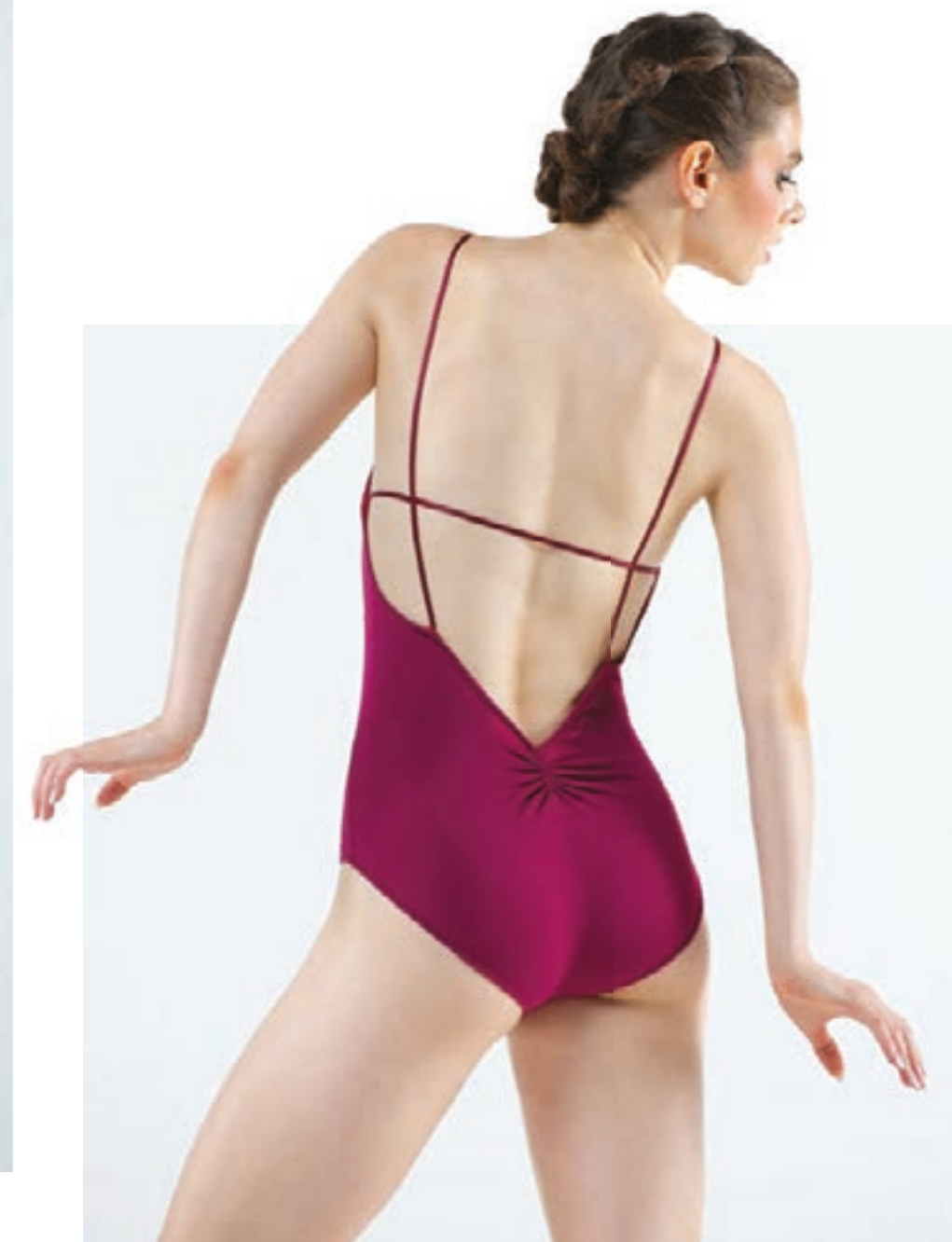




— CALLIOPE

Adult 36 > 44

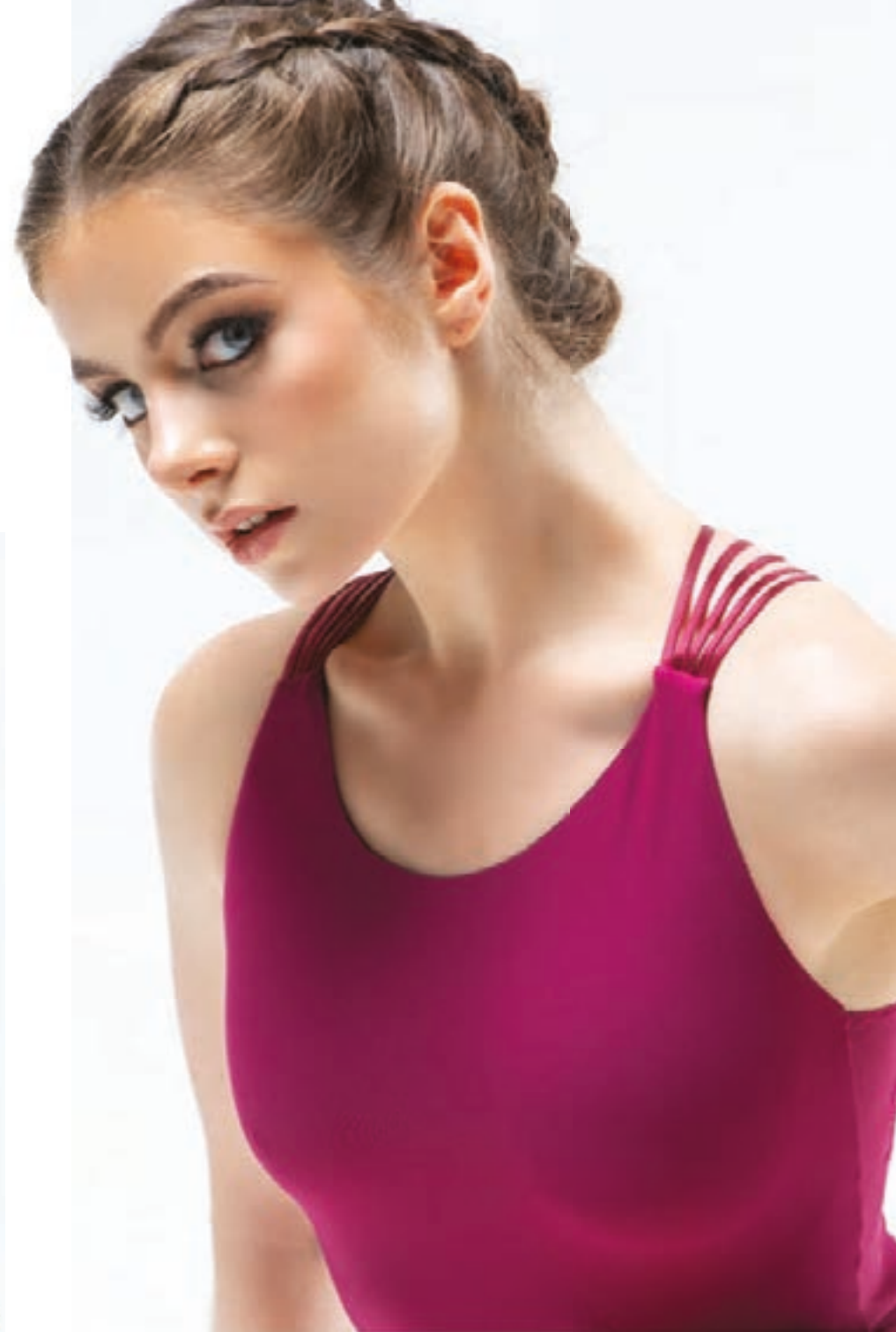
Noir · Raspberry · Marine



VALERA —

Adult 36 > 44

Marine · Raspberry · Noir





— VIA



Adult 36 - 44
Marine · Noir · Raspberry



— DARRA

Adult 36 - 44

Raspberry · Noir · Marine





GARNIER —

The ever classic Garnier collection's most unique feature is being refreshed, adding to the graceful effect of its styles: we are introducing a new embroidered design that decorates the edges of the four way stretch mesh elements used in each design. The swirling pattern is reminiscent of the Rococo era's flourishes used in the highest fashions and architecture of the time. We are introducing new and updated styles Lynn, Jacque, Cameron, Monia, Meredith, Denise, and Ivy. Garnier is offered in youth and adult sizing. **Jessica wearing Cameron in Medium Orchid**

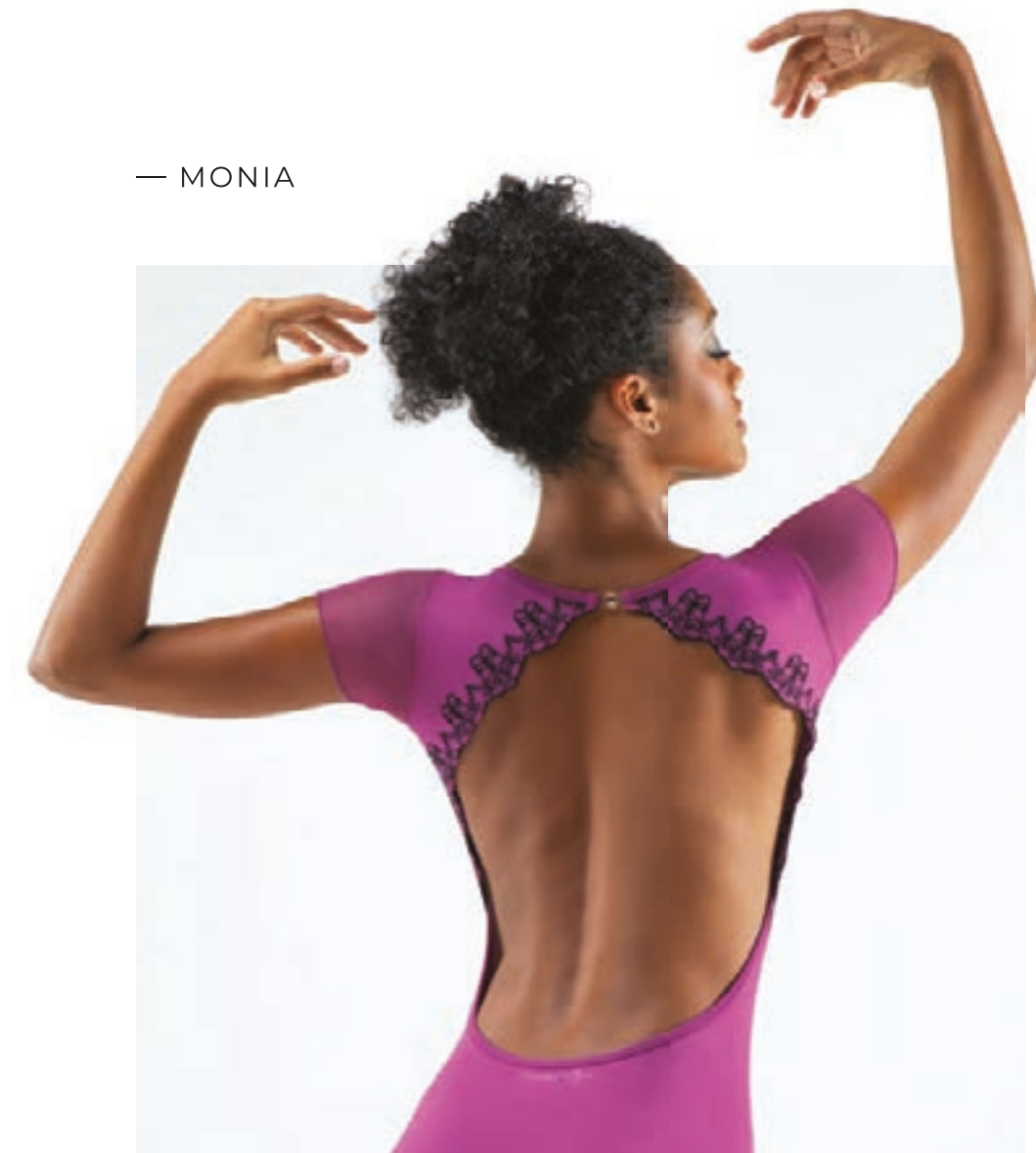
MEREDITH —

Adult 36 · 44 ◊ Youth 10 and 12
Noir · Encre Bleu · Medium Orchid





— MONIA



Adult 36 · 44 ♦ Youth 10 and 12
Encre Bleu · Medium Orchid · Noir



— CAMERON

Adult 36 › 44 ◊ Youth 8 › 12

Noir · Medium Orchid · Encre Bleu

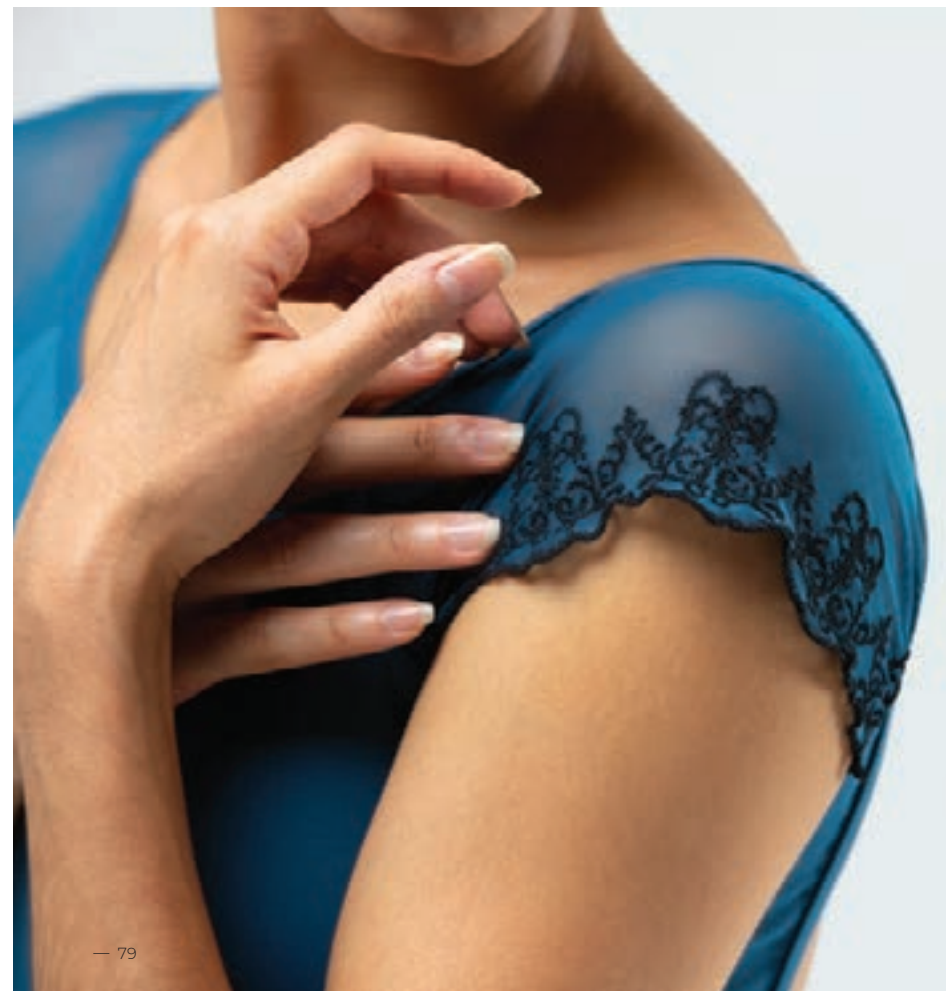
JACQUIE —

Adult 36 › 44 ◊ Youth 8 › 12
Medium Orchid · Noir · Encre Bleu



DENISE —

Adult 36 › 44 ◊ Youth 8 › 12
Encre Bleu · Noir · Medium Orchid



LYNN —

Adult 36 › 44 ◊ Youth 8 › 12
Noir · Medium Orchid · Encre Bleu



Skirt

IVY —

Adult 36/38 and 40/42 ◊ Youth 8/10 and 12/14
Encre Bleu · Medium Orchid · Noir
Pictured with Lynn leotard



A woman with dark hair pulled back is performing a handstand on a vertical pole. She is wearing a black, long-sleeved bodysuit with intricate lace detailing on the chest and upper arms. Her legs are extended upwards, with her feet resting on the pole. The background consists of diagonal stripes in shades of red and white, creating a dramatic, stage-like atmosphere. The lighting is focused on the woman, highlighting the texture of her outfit and the contours of her body.

IMPERIALE —

Since its introduction, the Imperiale collection has grown in popularity, thanks to the uniqueness of the designs. The common thread between each style is the floral and architecture-inspired flourishes depicted with a velvety texture. This year, we have added a new color, Ruby, to the Crystale, Orialie, and Simone, as well as new silhouettes, Jenna and Hilary. The new styles expand on the flocked motif and explore asymmetrical design and multi-textural elements. Imperiale is available in adult sizing. **Jessica wearing Hilary in Noir**



— JENNA
Adult 36 › 44
Noir





HILARY —
Adult 36 › 44
Noir



SIMONE —
Adult 36 > 44
Ruby · Encre Bleu · Noir







— CRYSTALE
Adult 36 - 44
Encre Bleu · Noir · Ruby

The Palace of Versailles continues to inspire us, centuries after its creation, with its opulent corridors and grand halls. The palatial gardens are where we found our spark for the collection. Each of our styles in the Versailles range carries a floral garland motif, with our new style, Sharon, using an eye-catching metallic finish to add to the appeal. Versailles is available in both youth and adult sizing. Jessica wearing Sharon in Viola

VERSAILLES —





SHARON —

Adult 36 › 44 ◊ Youth 10 and 12
Marine · French Blue · Noir · Viola · Orchidée

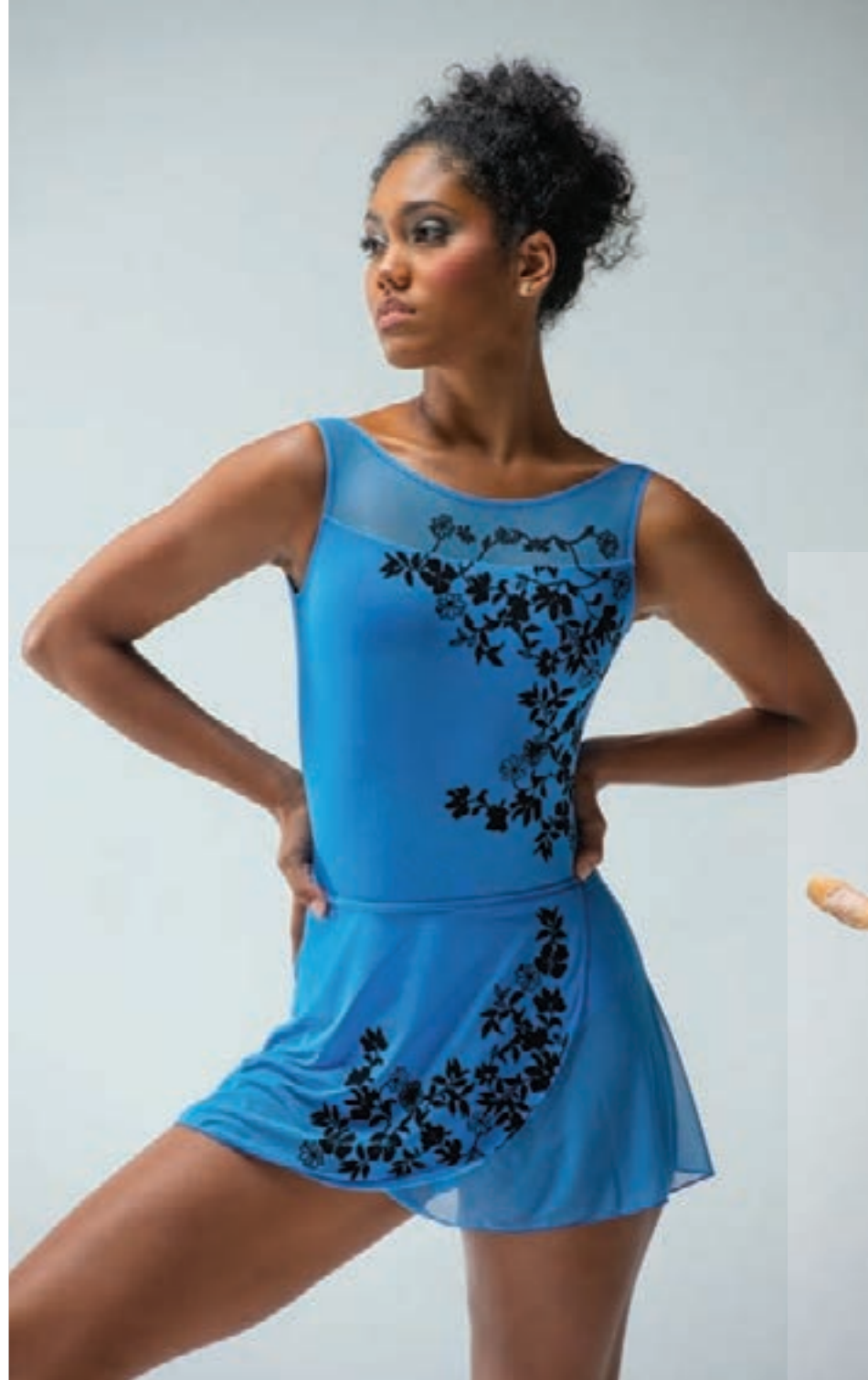




— ADÉLE

Adult 36 › 44 ◊ Youth 10 and 12

Noir with Noir · Orchidée · Viola · Marine · French Blue



Skirt

— LÉONIE

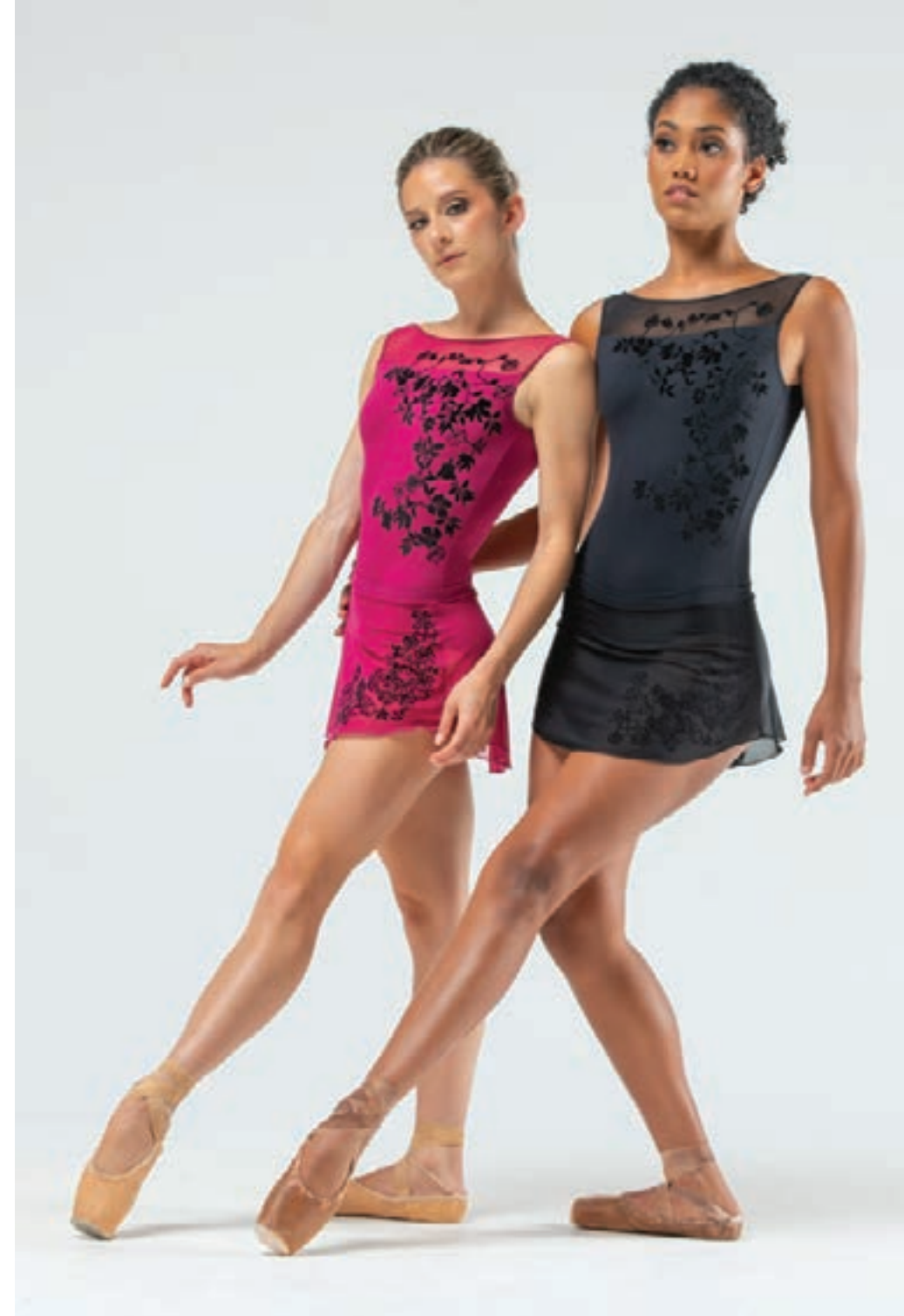
Adult 36/38 and 40/42 ◊ Youth 8/10 and 12/14
French Blue · Marine · Noir with Noir · Viola · Orchidée
Pictured with Adèle leotard



Skirt

— PHOEBE —

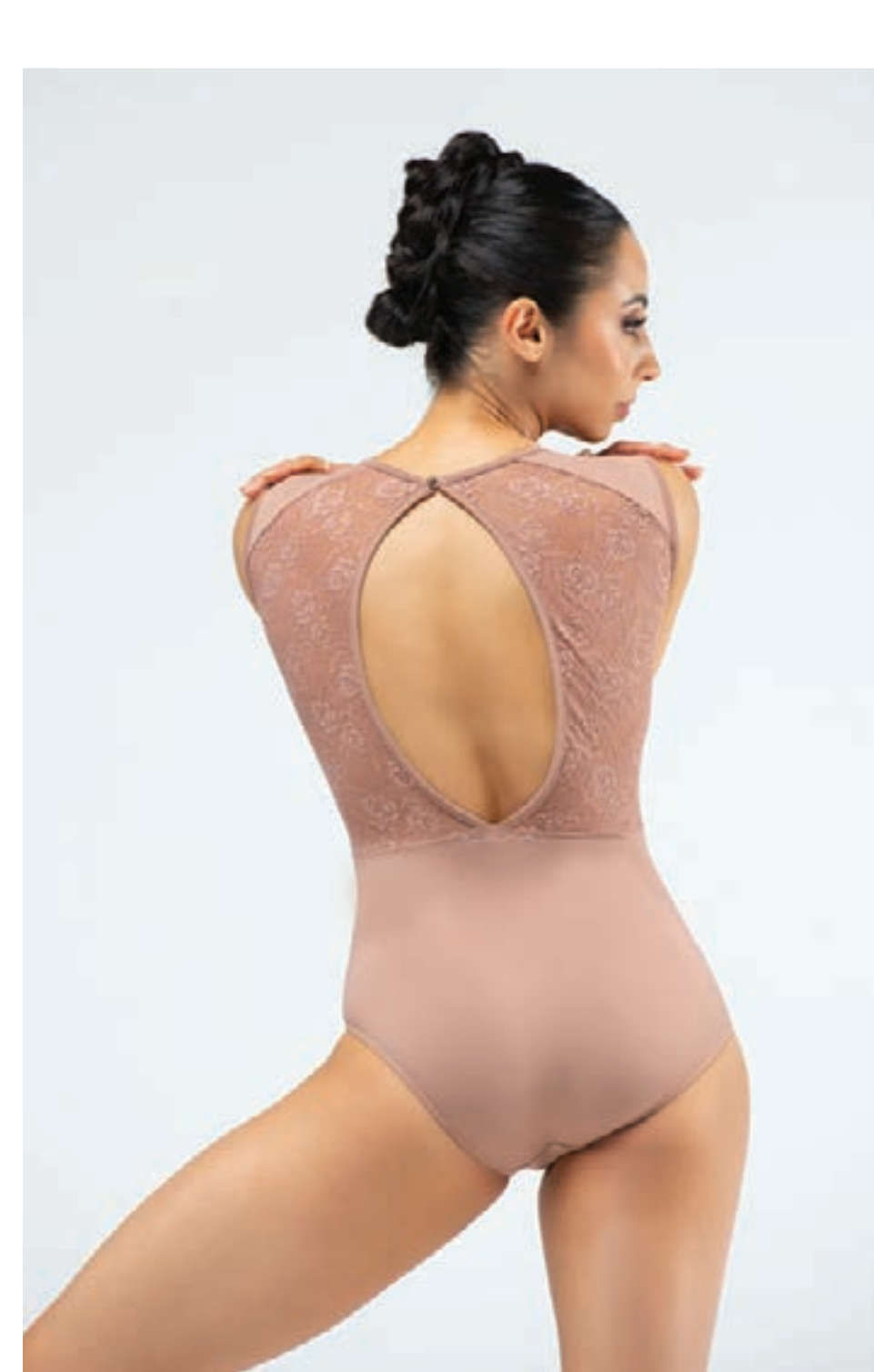
Adult 36/38 and 40/42 ◊ Youth 8/10 and 12/14
Viola · Orchidée · Noir with Noir · French Blue · Marine
Pictured with Adèle leotard



Ballet Rosa is known for elevating and reinventing classic silhouettes, and the Dentelle collection is a perfect example of this. Each style in this collection features our intricately detailed, yet durable floral lace added to timeless silhouettes. This year, we have added to our already plentiful collection of colors with the new shade Gris. Our Dentelle styles are available in youth and adult sizes. **Jessica wearing Rita in Gris**

— DENTELLE





HARMONIE —

Adult 36 › 44 ◊ Youth 10 and 12
Marine · Olive · Café au Lait · Gris · Orchidée · Noir







— FOSETTE

Adult 36 › 44 ◊ Youth 10 and 12
Orchidée · Marine · Noir · Olive · Café au Lait · Gris

MAEVA —

Adult 36 · 44 ◊ Youth 10 and 12
Olive · Gris · Café au Lait · Marine · Noir · Orchidée





— AMARI

Adult 36 · 44 ◊ Youth 10 and 12

Cris · Café au Lait · Marine · Olive · Noir · Orchidée



Our Étélan collection remains a cornerstone in our line of dancewear, thanks to our exclusive artistic floral printed mesh that elevates dancewear to fashion. A garden full of roses, anemones, and peonies blooming across the mesh evokes a dreamy feeling. This year, we are making three additions to the collection, all featuring our exclusive floral pattern paired with warm, autumnal Italian microfibre colors. Our new colors are Café au Lait and Marine. New styles include the Hazel high neck leotard, Imogen mesh top, and Zelda mesh leggings. Étélan is currently offered in adult sizing. **Nikita wearing Hazel in Marine**

ÉTELAN —

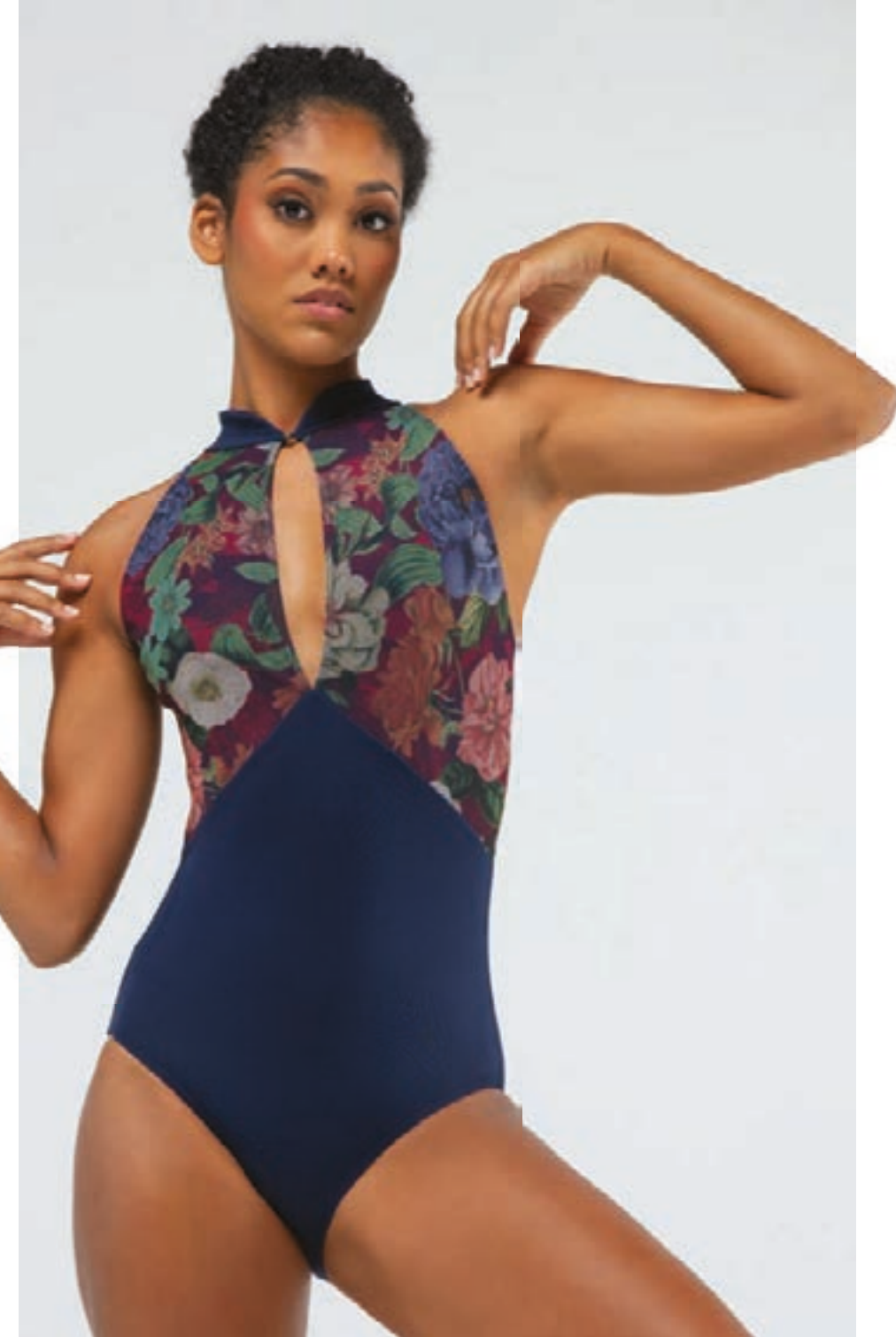


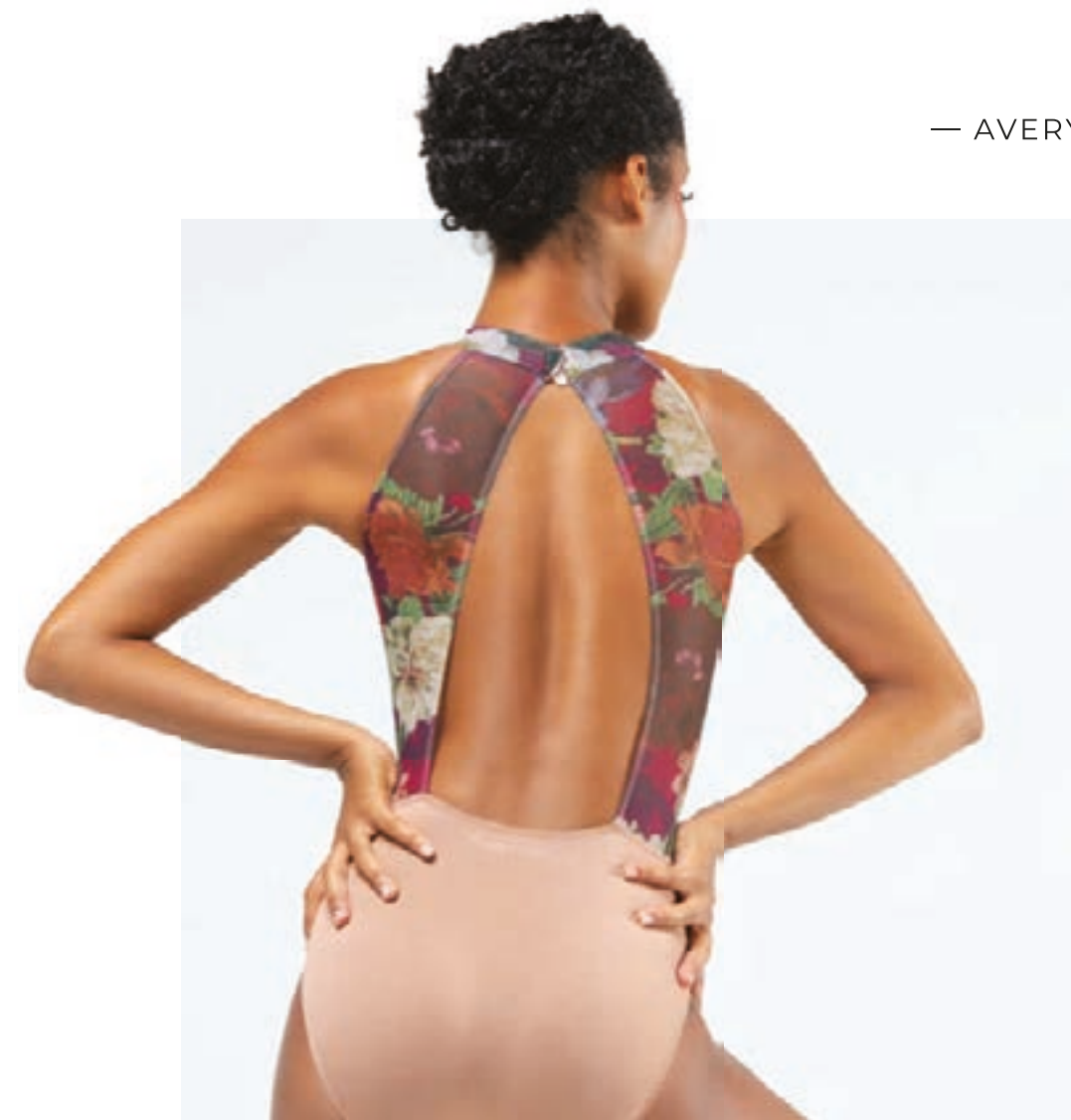


— HAZEL

Adult 36 - 44

Noir · Ruby · Olive · Café au Lait · Marine





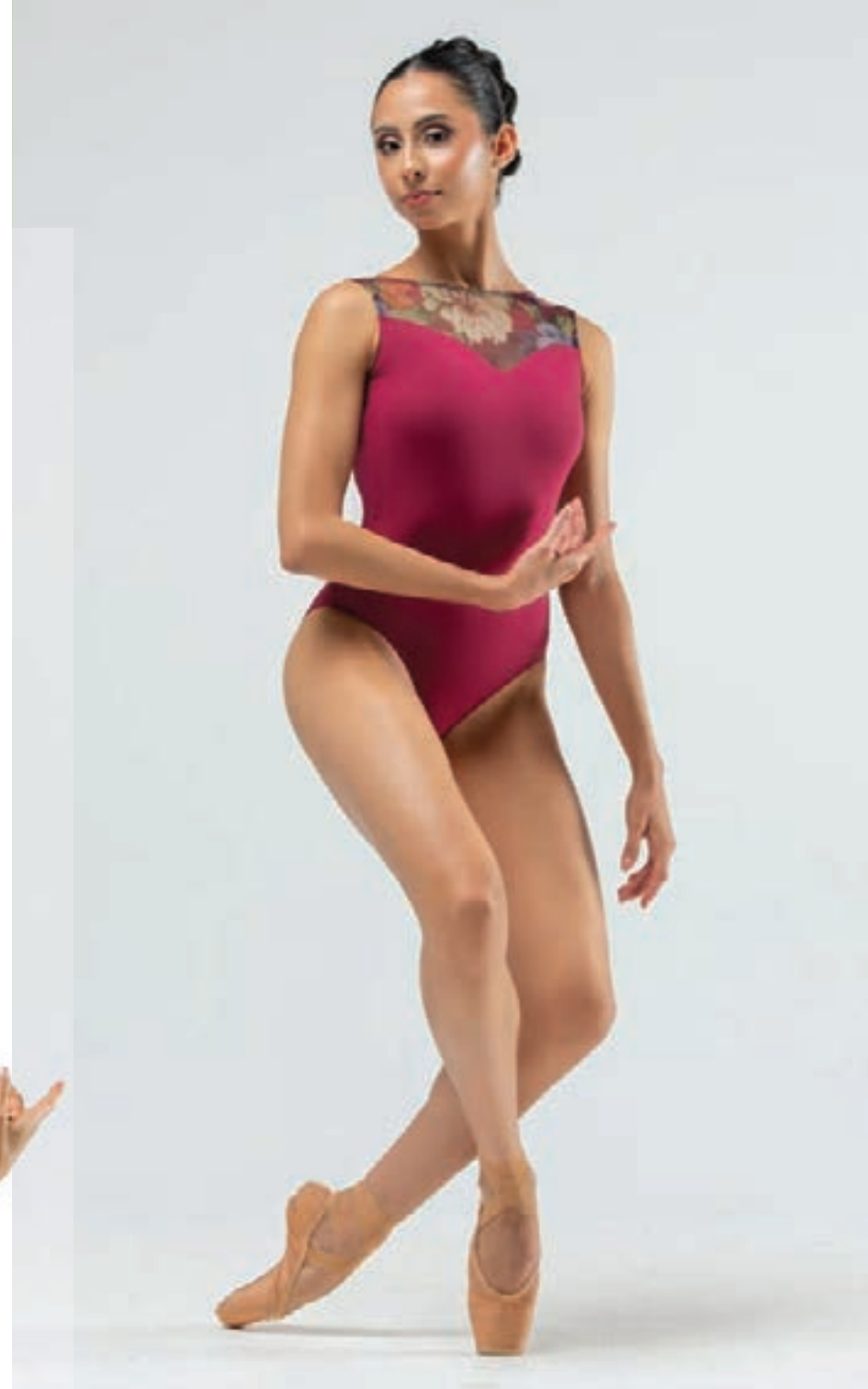
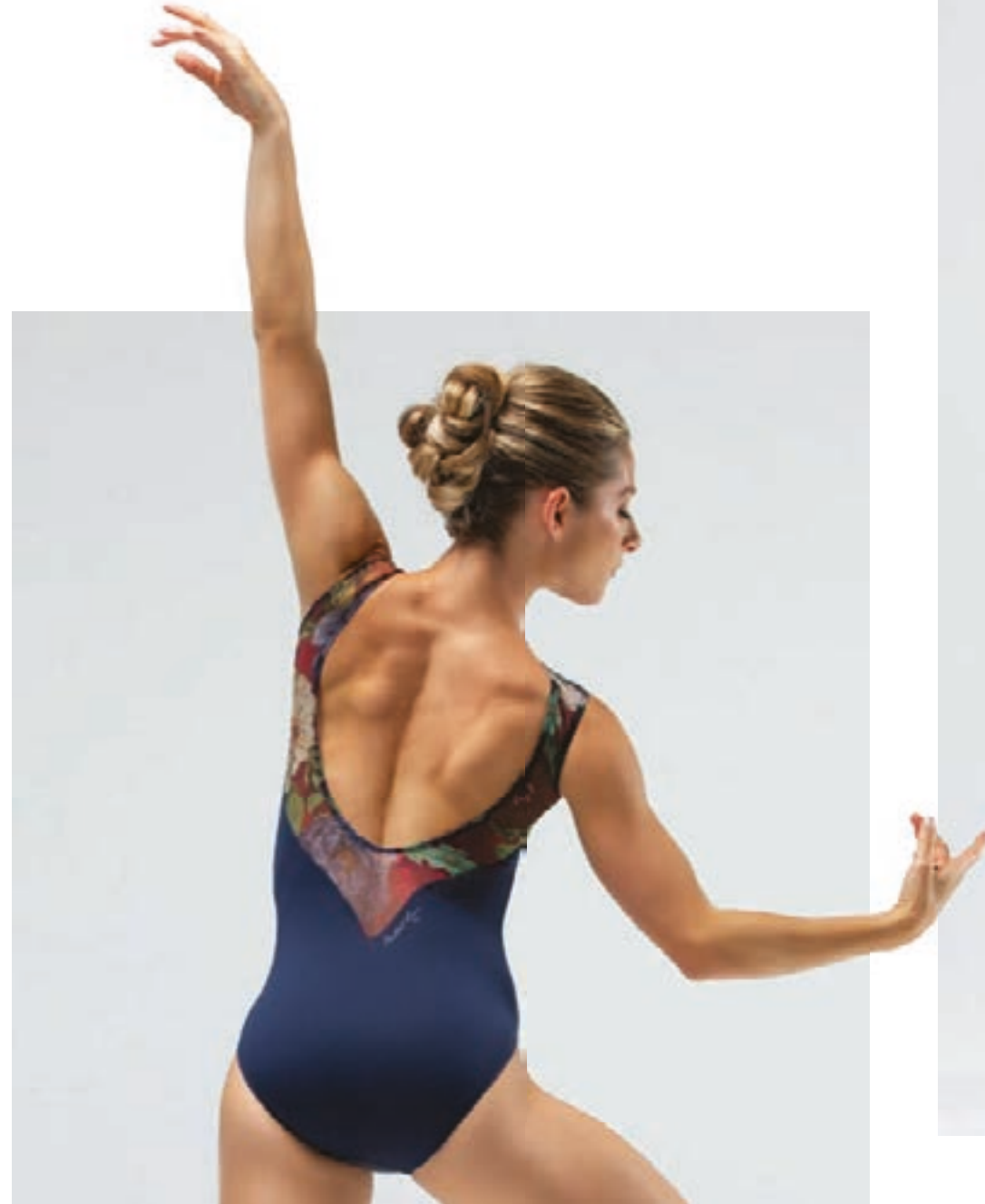
— AVERY

Adult 36 › 44
Noir · Marine · Olive · Ruby · Café au Lait

GABRIELLA —

Adult 36 - 44

Marine · Ruby · Noir · Olive · Café au Lait



VALENTINA —

Adult 36 - 44
Café au Lait · Noir
Ruby · Olive
Marine



Top

— IMOGEN —

Adult 36 > 44

Jardin

Pictured with Audrey leotard



Leggings

— ZELDA —

Adult 36 > 44

Jardin

Pictured with Kayla leotard



Skirt

DANICA —

Adult 36/38 › 40/42

Jardin

Pictured with Kayla leotard



Skirt

LIDA —

Adult 36/38 › 40/42

Jardin

Pictured with Audrey leotard



The ever modern Tulle collection features sleek designs that make a unique use of our four way stretch mesh material in ways that draw from fashion of iconic eras of the 20th century. The styles are sophisticated and streamlined, always with an element of mesh for a finishing touch. We expand our collection with new leggings and skirts, all featuring our unique stretch mesh. Four new colors add to the vast range of options in this collection: Ruby, Teal, Medium Orchid, and French Blue. This collection is available in adult sizing, as well as youth sizing. **Caitlin wearing Daphne in Ruby**

— TULLE





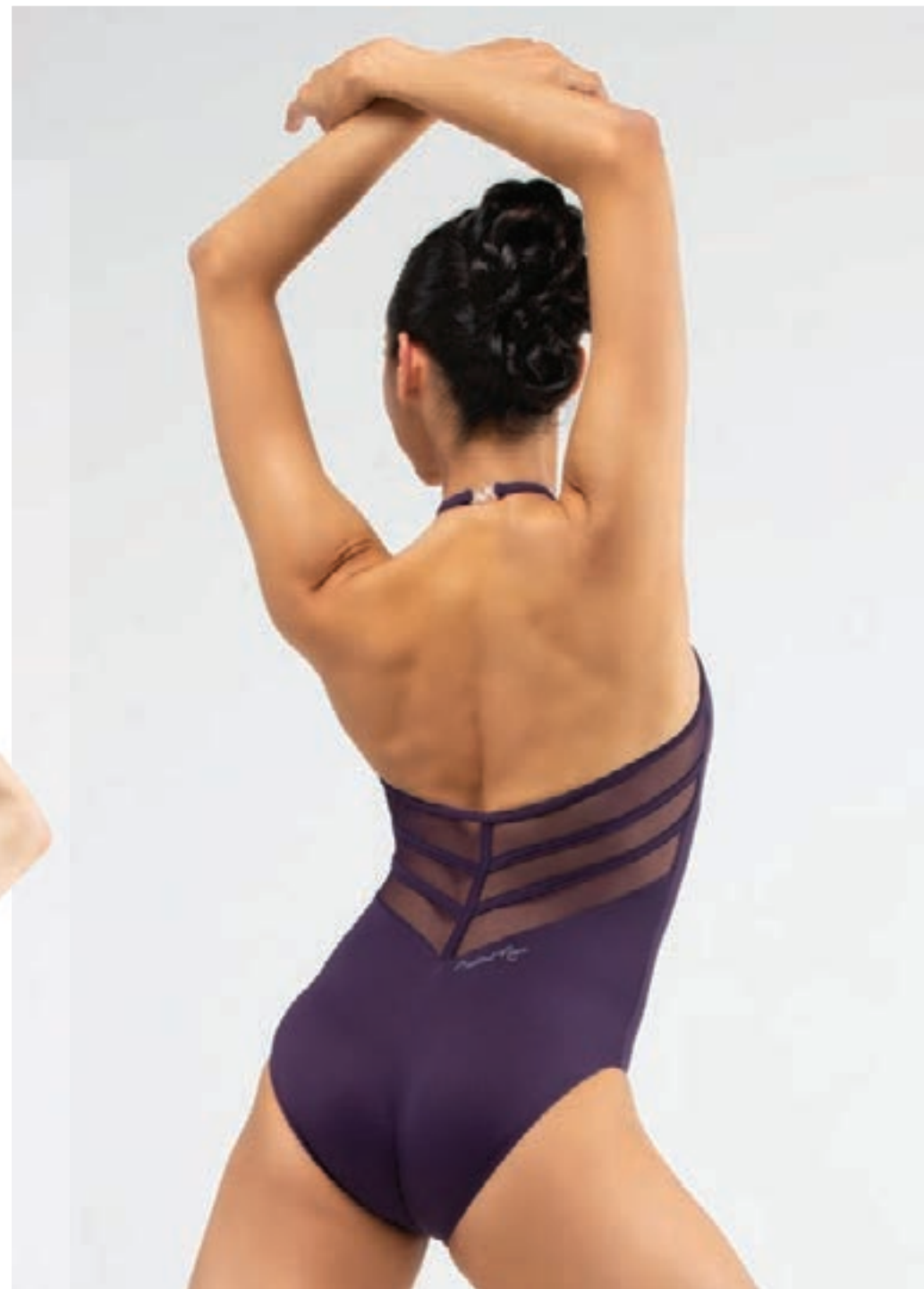
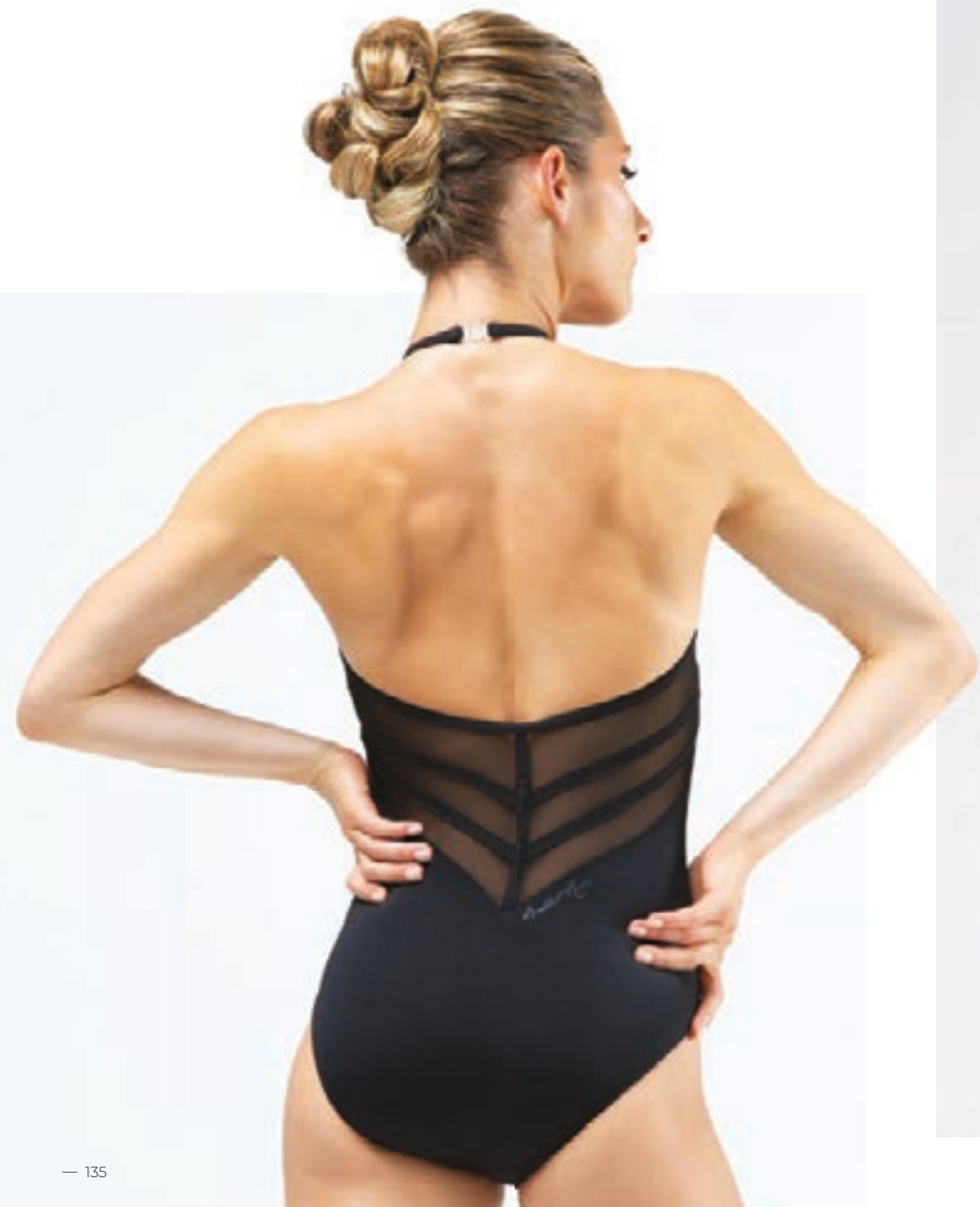
— ILARIA

Adult 36 › 44 ◊ Youth 10 and 12
Noir · Bordeaux



— VIENNA

Adult 36 · 44 ◊ Youth 10 and 12
Ruby · Noir · Viola





— DAPHNE

Adult 36 › 44 ◊ Youth 10 and 12
Ruby · Noir · Viola

RIVER —
Adult 36 › 44 ◊ Youth 10 and 12
Viola · Marine · Orchidée · Noir



HOPE —

Adult 36 - 44 ♦ Youth 10 and 12
Marine · Viola · Noir · Orchidée



DANNA —

Adult 36 - 44 ◊ Youth 10 and 12
Viola · Marine · Noir · Orchidée



NADÉGE —

Adult 36 · 44 ◊ Youth 10 and 12
Orchidée · Marine · Blanc · Royal · Rojo · Noir



Skirt

ERIKA —

Adult 36/38 › 40/42 ◊ Youth 8/10 and 12/14

Pictured colors (left to right): Orchidée · Prunus · Olive

Pictured leotards (left to right): Inaya · Hope · Calliope

Available in 27 colors. Please see index.



Skirt

MILLIE —

Adult 36/38 › 40/42 ◊ Youth 8/10 and 12/14

Pictured colors (left to right): Royal · Marine · Bordeaux

Pictured leotards (left to right): Lucienne · Emmeline

Available in 27 colors. Please see index.





Skirt

— NINETTE —

Adult 36/38 › 40/42

Youth 8/10 and 12/14

Pictured colors (left to right):

Rose · Viola · Gris

Pictured leotards (left to right):

Kayla · Naomi · Lois

Available in 27 colors.

Please see index.



Skirt

— SKYLAR —

Adult 36 › 44 › Youth 6 › 12

Pictured colors (left to right):

Medium Orchid · Ruby · Teal · French Blue

Pictured leotards (left to right):

Kayla · Kristen · Angeles · Lois

Available in 27 colors.

Please see index.



Skirt

— LUMI

Adult 36/38 > 40/42

Youth 8/10 and 12/14

Noir

Pictured leotards (left to right):

Celestine · River



Skirt

— FAITH

Adult 36/38 > 40/42 ♦ Youth 8/10 and 12/14

Noir

Pictured with Chanel leotard



Top
— NATASHA

Adult 36 › 44 ◊ Youth 6 › 12
 Pictured colors (left to right): Vert Emeraude · Azalée · Lagon · Parme · Rojo
 Pictured with Audrey leotards
 Available in 27 colors. Please see index.



Leggings

— LAETITIA

Adult 36 › 44 ◊ Youth 10 and 12

Pictured colors (left to right): Poudré · Aqua · Prunus · Ciel · Olive · Encre Bleu

Pictured leotards (left to right): Lois · Kayla · Célestine · Kristen · Audrey · Kristen

Available in 27 colors. Please see index.



— ITALIENNE

The true star of our Italiane collection is our high quality, award-winning Italian microfiber fabric. Every style is silky smooth and the fabric feels like a second skin, allowing the dancer to feel unencumbered by their dancewear while feeling complemented and comfortable. The collection offers a wide variety of form flattering silhouettes that enhance the lines of the dancer. This year, we have introduced the Kristen crossed keyhole leotard and the Lois asymmetrical high neck leotard. The collection is available in 15 exciting color options, in both adult sizing, as well as youth sizing. **Melissa wearing Lois in Viola**

KRISTEN —

Adult 36 › 44 ◊ Youth 10 › 12

Pictured colors (left to right): Medium Orchid · Café au Lait · French Blue · Noir

Available in 15 colors. Please see index.





— LOIS

Adult 36 › 44 ◊ Youth 10 › 12

Pictured colors (left to right): Gris · Royal · Orchidée · Viola · Marine

Available in 15 colors. Please see index.





— ANGELES

Adult 36 › 44 ◊ Youth 8 › 12

Pictured colors (left to right): Ruby · Poppy · Olive · Marine

Available in 15 colors. Please see index.



NARDIA —

Adult 36 · 44 ◊ Youth 8 · 12

Pictured colors (left to right): Gris · Blanc · Medium Orchid · Café au Lait · Royal
Available in 15 colors. Please see index.





— CELESTINE



Adult 36 · 44 ♦ Youth 10 and 12
Pictured colors (left to right): Encre Bleu · Viola · Teal · Noir
Available in 15 colors. Please see index.





— KAYLA

Adult 36 · 44 ◊ Youth 8 · 12

Pictured colors (left to right): Olive · Poppy · Blanc

Available in 15 colors. Please see index.






— AUDREY



Adult 36 · 44 ♦ Youth 10 and 12
Pictured colors (left to right): Teal · Orchidée · Encre Bleu · French Blue
Available in 15 colors. Please see index.

A woman in a black leotard and ballet slippers is captured in a dynamic dance pose, leaning back with one leg raised. She is illuminated by a vibrant green light that highlights her form against a dark background. The lighting creates a dramatic, ethereal atmosphere.

Our Bamboo collection has become a favorite choice for dancers because of the smooth, silky bamboo fabric that creates a welcome retreat for the hardworking body. We use a luxuriously soft, yet lightweight bamboo jersey that is gentle on the skin and is versatile for lounging, travel, warming up, or cooling down. This year, we introduce three new designs: the cozy Kaiko romper, the chic Kimi cropped top, and the effortless Mio mock wrap top. All bamboo styles are available in adult sizing. **Melissa wearing Kaiko in Noir**

— BAMBOO



Romper
KAIKO —
Adult 36 · 44
Bleu Prusse · Noir · Nuit





Jumpsuit
— YUME
Adult 36 › 44
Nuit · Bleu Prusse · Noir



FUKI —

Adult 36 > 44
Nuit · Taupe · Noir



MISAO —

Adult 36 > 44
Taupe · Noir · Nuit





Top
— MIO —
Adult 36 › 44
Nuit · Noir
Pictured with Kayla Leotards



Top
KIMI —
Adult 36 › 44
Noir · Nuit
Pictured with Sora Pants

Top

ICHIKA —

Adult 36 · 44

Taupe · Noir · Nuit

Pictured with Sora Pants



Top

MEGUMI —

Adult 36 · 44

Noir · Taupe · Nuit

Pictured with Kayla Leotards



Hoodie

MIDORI —

Adult 36 · 44

Noir · Nuit with Noir

Pictured with Sora Pants



Hoodie

REN —

Adult 36 · 44

Nuit · Noir

Pictured with Sora Pants



Pants

SORA —

Adult 36 > 44

Nuit · Noir

Pictured with Calliope and Via Leotards



Pants

AYANA —

Adult 36 > 44

Nuit · Noir

Pictured with Hope Leotards



Shorts
NOBU —




Adult 36 > 44
Blanc · Nuit · Noir
Pictured with Kayla and Audrey Leotards



INDEX —




★ **SHARON**
36 › 44
10 · 12
P. 96



Versailles Collection
Strappy Back Camisole Leotard with Metallic Floral Foil
Microfiber with Metallic Print

Noir 01
Marine 07
Orchidée 13
Viola 73
French Blue 95


💧 **SIMONE**
36 › 44
P. 88



Imperiale Collection
Zip Front Flock Embroidery Leotard
Microfiber with Velour Print

Noir 01
Encre Bleu 77
Ruby 82


💧 **SKYLAR**
36 › 44
6 · 12
P. 149



Tulle Collection
Pull On Skirt
Microfiber with Stretch Mesh

Teal 74	Vert Emeraude 28	Parme 12	Noir 01
Encre Bleu 77	Azalée 29	Orchidée 13	Blanc 02
Ruby 82	Chair 30	Aqua 15	Rose 03
Olive 89	Gris 47	Royal 16	Ciel 04
French Blue 95	Poudré 60	Rouge 17	Jaune 06
Medium Orchid 96	Café au Lait 72	Lagon 23	Marine 07
	Viola 73	Bordeaux 26	Prunus 08

★ **SOLINE**
36 › 44
10 · 12
P. 30



Vincennes Collection
Boatneck Mid-Back Lace Midriff Panel Tank Leotard
Matte Lycra with Lace

Noir 01
Royal 16
Bordeaux 26


SORA
36 › 44
P. 188



Bamboo Collection
Front and Back Seam Cuffed Joggers
Stretch Bamboo

Noir 01
Nuit 62

💧 **VALENTINA**
36 › 44
P. 124



Ételan Collection
Mesh Long Sleeve Low Back Leotard
Microfiber with Printed Stretch Mesh

Noir 01
Marine 07
Café au Lait 72
Ruby 82
Olive 89

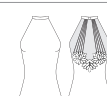
💧 **VALERA**
36 › 44
P. 64



Fontainebleau Collection
Laser Cut Floral Strappy Back Tank Leotard
Matte Lycra with Laser Cut Embroidery and Spaghetti Elastic

Noir 01
Marine 07
Raspberry 104


💧 **VIA**
36 › 44
P. 67



Fontainebleau Collection
Laser Cut Floral Strappy Back Halter Leotard
Matte Lycra with Laser Cut Embroidery and Spaghetti Elastic

Noir 01
Marine 07
Raspberry 104

💧 **VIENNA**
36 › 44
10 · 12
P. 135



Tulle Collection
Structured Mesh Back Halter Leotard
Microfiber with Stretch Mesh

Noir 01
Viola 73
Ruby 82

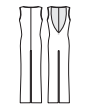
★ **XENIA**
36 › 44
P. 61



Fontainebleau Collection
Camisole Strap Laser Cut Strappy Back Leotard
Matte Lycra with Laser Cut Embroidery and Spaghetti Elastic

Noir 01
Marine 07
Raspberry 104


YUME
36 › 44
P. 179



Bamboo Collection
V-Back Straight Leg Jumpsuit
Lightweight Bamboo

Noir 01
Nuit 62
Bleu Prusse 70

★ **ZELDA**
36 › 44
P. 127



Ételan Collection
Mesh Ankle Length Leggings with Elastic Waistband
Printed Stretch Mesh

Jardin 103

Color references are merely informative.
Colors may vary slightly depending on material and dyeing batch.

SIZE CONVERSION CHART

Ballet Rosa	36	38	40	42	44
USA UK Canada Australia Japan	XS	S	M	L	XL
Italy	40	42	44	46	48
Germany Austria Netherlands Sweden Switzerland	34	36	38	40	42
Portugal Spain France Belgium	14a / 36	38	40	42	44

This chart shows the nearest international conversion for different countries.
Size and fit can vary, so please use this chart as a general guide only.

HOW TO MEASURE

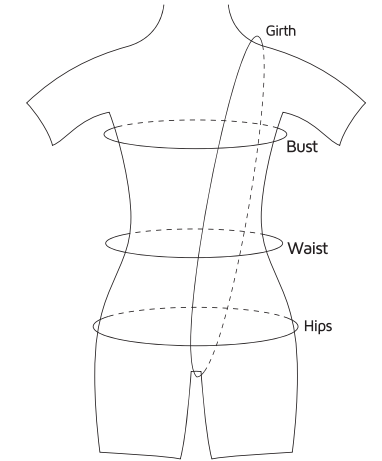
Bust Wrap the measuring tape around the fullest part of your chest.

Waist Measure around your natural waistline, which is the smallest area of the waist.

Hips Stand with feet together. Keeping tape straight and parallel to the floor, measure around fullest part.

Girth Place a tape measure at the top of the shoulder where a leotard strap sits, then down through the crotch and back to the same shoulder.

Inseam Measure inside the length of your leg from the crotch to bottom of hem.



LADIES

cm (inch)

Bust	Waist	Hips	Girth	Size
82-86 (32/34)	60-64 (24/25)	86-92 (34/36)	140 (55)	36
86-92 (34/36)	64-67 (25/26)	92-97 (36/38)	147 (58)	38
92-97 (36/38)	67-72 (27/28)	97-101 (38/40)	152 (60)	40
97-101 (38/40)	73-79 (29/31)	101-106 (40/42)	157 (62)	42
101-106 (40/42)	79-84 (31/33)	106-112 (42/44)	162 (64)	44

YOUTH

cm (inch)

Bust	Waist	Hips	Girth	Size
51-53 (20/21)	48-51 (19/20)	53-58 (21/23)	89-96 (35/38)	4
55-58 (22/23)	53-55 (21/22)	58-63 (23/25)	99-106 (39/42)	6
60-63 (24/25)	53-58 (21/23)	63-68 (25/27)	109-116 (43/46)	8
66-71 (26/28)	58-63 (23/25)	68-73 (27/29)	117-126 (47/50)	10
73-78 (29/31)	66-71 (26/28)	76-81 (30/32)	117-126 (50/53)	12

These charts should be used as a general fitting guide only.
Size availability and individual sizing may vary by style.

WASHING INSTRUCTIONS BY MATERIAL

MATERIAL	COMPOSITION	INSTRUCTIONS
Microfiber	90% Polyamide · 10% Elastane	
Matte Lycra	80% Polyamide · 20% Elastane	
Stretch Mesh	94% Polyamide · 6% Elastane	
Lace	84% Polyamide · 16% Elastane	
Stretch Bamboo	90% Bamboo Rayon · 10% Elastane	
Lightweight Bamboo	100% Bamboo Rayon	
Printed Mesh	94% Polyester · 6% Elastane	

WASH AND SPECIAL CARE

Garments featuring embellishment or embroidery should be handled with extra care. The brand will not be held liable for any damages caused by excessive or inappropriate usage.

Keeping your Ballet Rosa products in good shape depends solely upon your care. Each material has different quality standards. Please respect the wash care labels and the care instructions stated above.

Hand wash in cold water · Use mild detergent
Do not iron · Do not tumble dry · Allow to dry flat

Intense sweating combined with the high temperature of the body over long periods could have negative effects and cause discoloration.

